

SOLIDARIDAD

CHANGE **THAT MATTERS**

Introduction of Solidaridad

SUSTAINABLE LAND USE

Mary Mkonyi

Country Projects Manager Tanzania

Solidaridad East and Central Africa Expertise Centre

(SECAEC)

Solidaridad

A thick, horizontal yellow brushstroke graphic that tapers at both ends, positioned below the Solidaridad logo.

Coffee



Cotton



Textiles



Fruit



Cocoa



Soy



Palm oil



Sugarcane



Biomass



Tea



Gold



Solidaridad international network organization



Solidaridad Netherlands
 Head office: Utrecht ★
 Active in all continents

Solidaridad Andes
 Head office: Lima ★
 Chile, Colombia, Ecuador, Peru

Solidaridad West Africa
 Head office: Accra ★
 Burkina Faso, Ghana, Ivory Coast, Cameroon, Mali, Nigeria, Senegal

Solidaridad Southern Africa
 Head office: Gaborone ★
 Angola, Botswana, Lesotho, Malawi, Madagascar, Mauritius, Mozambique, Namibia, South Africa, Swaziland, Zambia, Zimbabwe

Solidaridad South and South-East Asia
 Head office: New Delhi ★
 India, Bangladesh, Nepal, Indonesia, Malaysia, Pakistan, Papua New Guinea, Sri Lanka, Vietnam

Solidaridad Central America
 Head office: Guatemala City ★
 Belize, Costa Rica, Guatemala, Haiti, Honduras, Mexico, Nicaragua

Solidaridad South America
 Head office: Buenos Aires ★
 Argentina, Bolivia, Brazil, Paraguay

Solidaridad East Africa
 Head office: Nairobi ★
 DR Congo, Ethiopia, Kenya, Malawi, Uganda, Tanzania, Zambia

Solidaridad China
 Head office: Beijing ★
 China

Core Strategies

- Sustainable Market Development
- Producer Development & Workers Support
- Private Sector Partnerships
- CSO Capacity Building, Expertise Development and Tools
- Campaigning and Policy Influencing
- Fundraising



Solidaridad

Eastern and Central Africa

ISO 9001 : 2008 Certified (2012)

Expertise Support to:

1. Ethiopia
2. Uganda
3. Kenya
4. Tanzania
5. Burundi
6. Rwanda
7. DR Congo
8. Zambia
9. Malawi

1. Angola
2. Ghana
3. Ivory Coast
4. Cameroun
5. Mozambique
6. Zimbabwe
7. South Africa

Solidaridad

Vision and Mission

Vision:

We envision a world in which all we produce, and all we consume, can sustain us while respecting the planet, each other and the next generations.

Mission:

We bring together commodity supply chain actors and engage them in innovative solutions to improve production, ensuring the transition to a sustainable and inclusive economy that maximizes the benefit for all.

WHAT IS NEW TREND OF CHANGE FROM SOLIDARIDAD?



On their own initiative and with support from conservation projects, farmers in the Uluguru Mountains of Tanzania developed a diversified sustainable land use management system that combines terracing and agroforestry. (Photo: Hanspeter Liniger)

Solidaridad

SUSTAINABLE LAND MANAGEMENT FOR IMPROVED LIVELIHOOD

WHERE:

KILIMANJARO & ARUSHA REGION



CONTEMPORARY LAND USE PRACTICES
KILIMANJARO&ARUSHA REGION DOES NOT REFLECT WHAT
WE SEE IN THE IMAGE BELOW



WHY SUSTAINABLE LAND MANAGEMENT FOR IMPROVED LIVELIHOOD NOW?

SOLIDARIDAD is venturing on this as a result of confirmation of a magnitude of problems that are circulated around the ecosystems and watersheds of the Kilimanjaro experiencing an extensive process of degradation and deforestation

Solidaridad

WHY SUSTAINABLE LAND MANAGEMENT FOR IMPROVED LIVELIHOOD NOW? CONT...

Extensive degradation and deforestation of the ecosystems and watersheds of the Kilimanjaro&Arusha are attributed to factors related to:

- ❖ Population growth
- ❖ Land use change
- ❖ Poor land management practices
- ❖ Unsustainable harvesting of natural resources
- ❖ Migration
- ❖ Declining commodity prices and climate change

All these leading to dramatic changes to the landscapes

WITH SUSTAINABLE LAND MANAGEMENT FOR IMPROVED LIVELIHOOD NOW? CONT...

As of now,

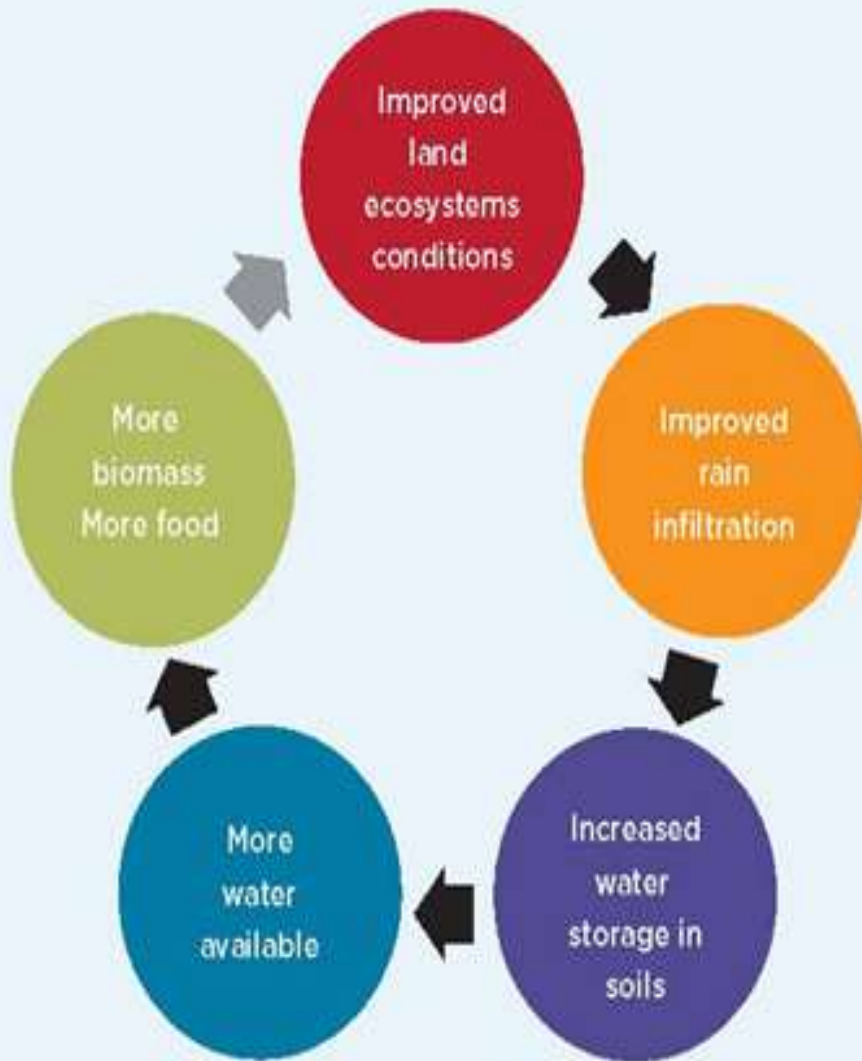
- ❖ Many farmers have shifted from the agroforestry based home garden system to annual cash/subsistence crops such as maize, beans, which need less shade.
- ❖ This has necessitated clearing of coffee and other shade trees, without replacing the tree based system with equivalent soil fertility management systems.
- ❖ Thus soil was left bare for longer periods with consequent run-off and siltation

SUSTAINABLE LAND MANAGEMENT FOR IMPROVED LIVELIHOOD

WHAT ARE WE GOING TO DO?

SOLIDARIDAD intends to promote Sustainable Land Management through policy influencing, thus providing basis for economic development, food security and sustainable livelihoods while restoring the ecological integrity of the Kilimanjaro region.

Solidaridad



**IMPROVED LIVELIHOODS
THROUGH RESTORATION OF
ECOLOGICAL INTEGRITY OF
THE REGION**

CAN IT BE ACHIEVED?

SOLIDARIDAD will achieve sustainable land management for improved livelihood by:

- ❖ Creating an enabling environment for mainstreaming Sustainable Land Management (SLM) into sectoral policies and planning by strengthening legislation mechanisms for effective implementation and enforcement at the local level and support the National SLM Policy Dialogue in partnership with Stakeholders

CAN IT BE ACHIEVED? CONT...

- ❖ Strengthening the Government and Civil Society organizations (CSO) to coordinate and mainstream SLM and NRM into district development strategy and plans by ensuring that the government and CSO's plan and execute sustainable land management interventions enhanced, through this intervention.

WE WANT TO BE HERE



SUSTAINABLE LAND MANAGEMENT FOR IMPROVED LIVELIHOOD

WHO IS INVOLVED:

A range of actors:

- Vice Presidents Office – Department of Environment (VPO-DEO)
- Prime Minister's Office – Regional Administration and Local Government (PMO-RALG)
- Ministry of Agriculture, food Security and cooperatives (MAFC)
- Ministry of Livestock Development and Fisheries (MLD&F)

SUSTAINABLE LAND MANAGEMENT FOR IMPROVED LIVELIHOOD

WHO IS INVOLVED:

A range of actors:

- ❖ Ministry of Water and Irrigation (MWI)
- ❖ Ministry of Natural Resources and Tourism (MNRT)
- ❖ Ministry of Energy and Minerals
- ❖ Ministry of Trade, Industries and Marketing (MTIM)
- ❖ At large, it will work at all administrative levels – National, regional, district-level staff, and through Village Councils and Village Development committees

WHY ALL THESE ACTORS?

There are several risks and assumptions that will influence this program and to make it happen together actors will be collectively be needed to ensure that:

- ❖ The government departments are involved from inception.
- ❖ Build joint strategies, joint grant applications and discussing niches and complementarity roles or each of the CSOs

Solidaridad

WHY ALL THESE ACTORS?

- ❖ Develop gender sensitive planning procedures, highlight issues of importance to women, and mobilize women, through mass awareness programs, as active project partners and stakeholders

WHY ALL THESE ACTORS?

- ❖ Design the program to maximize stakeholder and community participation. As communities will implement activities that reflect community priorities, there is no reason to anticipate a shift in their willingness to participate

THE SUCCESS FACTORS

This project will adopt a cross-sectoral approach which makes the involvement of all sectors including agriculture, water, livestock and natural resources essential for its success. The key stakeholders and beneficiaries however, will be the land-users, local communities, local government agencies, CSOs and the private sector in the Kilimanjaro region

Solidaridad

Thank you!



MARY MKONYI
Marym@solidaridadnetwork.org



solidaridadnetwork.org



/solidaridadnetwork



@solidaridadnetw



/company/solidaridad